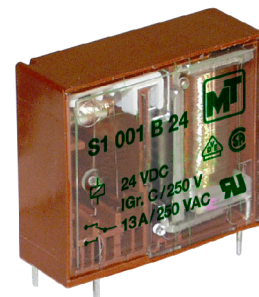


# S1 Power-PCB-Relay 1-pole 16A



## Technical data

Contact data		
Type of contact		Single contact
Pinning	mm	5,0
Configuration		1 CO / 1NO
Rated voltage/max. breaking voltage	VAC	250 / 440
Rated current	A	16
Make current (max 5s)	A	25
Rated breaking capacity (cos φ = 1)	VA / W	4300 / 350
Contact resistance	mΩ	≤ 50
Contact material		AgCdO / AgSnO

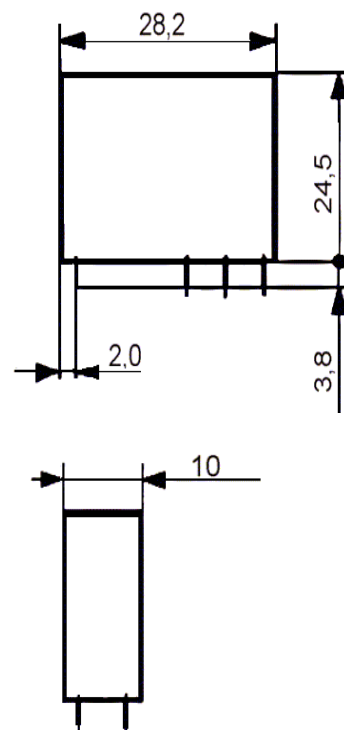


General data		
Mechanical life	>Operations	30 x 10 <sup>6</sup>
Electrical life at rated voltage	>Operations	1 x 10 <sup>5</sup>
Max. Switching rate at rated voltage	Operations / h	900
Operate time / Release time	Approx. Ms	8 / 5
Dielectric strength contacts / coil	≥ VAC <sub>rms</sub>	4000
Dielectric strenght open contacts	≥ VAC <sub>rms</sub>	1000
Clearance / creepage	mm	> 8 / 8
Insulation group		C / 250
Ambient temperature	°C	-40...+ 85
Position		Any
Solder bath temperature / -duration	°C / sec	260 / 10
approvals		VDE

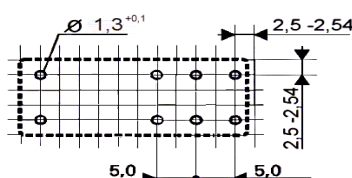
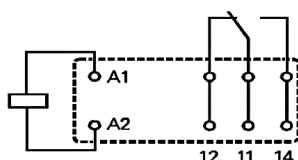
Coil data at + 20°C		
Nominal voltage	VDC	5...110
Nominal coil power	Approx. W	0,5
Operate power	Approx. W	0,19..0,32
Pull-in voltage	% of U <sub>N</sub>	≤ 71
Drop-out voltage	% of U <sub>N</sub>	≥ 10

U <sub>N</sub> (VDC)	R (Ohm)	U <sub>PI</sub> (VDC)		U <sub>DO</sub> (VDC)	I <sub>N</sub> (mA)
		AK	UK		
5	50 ± 10 %	≤ 3,3	≤ 3,5	≥ 0,5	100,0
6	70 ± 10 %	≤ 3,8	≤ 4,2	≥ 0,6	85,7
12	250 ± 10 %	≤ 6,9	≤ 7,8	≥ 1,2	48,0
24	1.100 ± 10 %	≤ 15,0	≤ 17,0	≥ 2,4	21,8
36	2.500 ± 10 %	≤ 22,6	≤ 25,5	≥ 3,6	14,4
48	3.700 ± 15 %	≤ 30,5	≤ 33,4	≥ 4,8	13,0
60	6.000 ± 15 %	≤ 37,8	≤ 42,6	≥ 6,0	10,0
110	23.500 ± 15 %	≤ 77,0	≤ 77,0	≥ 11,0	4,7

## Dimensions



## Wiring / PCB-layout



View on solder pins. Dimensions in mm.

# S1 Power-PCB-Relay 1-pole 16A



## Ordering key

1.	2.	3.	4.	5.	6.	7.	8.	9.
<b>S1</b>	<b>0</b>	<b>0</b>	<b>1</b>	<b>B</b>	<b>7</b>	<b>2</b>	<b>4</b>	<b>R</b>

Character 1	Type	S1 = Vertical						
Character 2 till 4	Configuration	0 = Number of	NO					
		0 = Number of	NC					
		<b>1 = Number of</b>	<b>CO</b>					
Character 5	Contact material	<b>B = AgCdO</b>						
		E = AgSnO						
Character 6	Pinning	7 = Pinning 5 mm16A-version, double pinning						
Character 7 till 8	Coil code	05 = 5 VDC	<b>06 = 6 VDC</b>	<b>12 = 12 VDC</b>	<b>24 = 24 VDC</b>			
		36 = 36 VDC	48 = 48 VDC	60 = 60 VDC	79 = 110 VDC			
Character 9	Special version	R = Remanence with 1 winding						

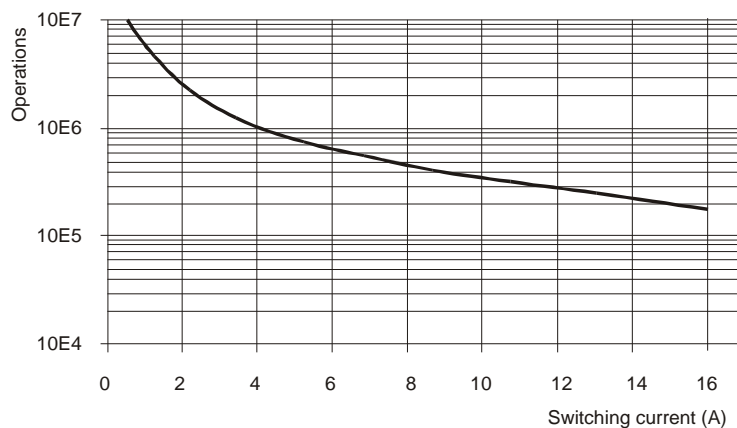
**Bold = Standard types** – further details or request

**Ordering key, example: S1 001 B 724**

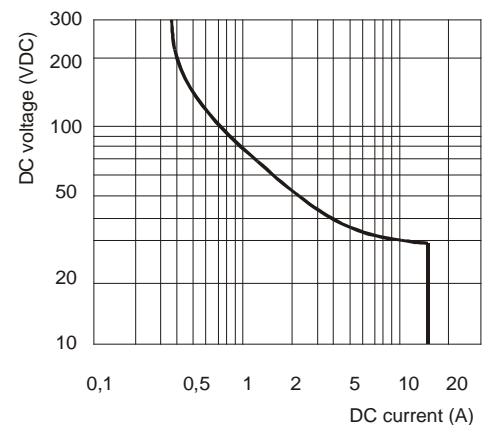
Power-PCB-Relay, 1 CO, 16A, AgCdO, 24 VDC coil

## Electrical Specifications

Electrical life AC 1



Max. DC load breaking capacity



**SONG CHUAN EUROPE GmbH**  
Im Petersfeld 6  
65624 Altendiez  
Tel. +49 (06432) 8006-0  
Fax +49 (06432) 8006-50

**Our Produkt range**

- PCB-Power-Relay
- Automobile Relays
- Industrial Relays
- Accessoires