

The following page(s) are extracted from multi-page Kuhnke product catalogues or CDROMs and any page number shown is relevant to the original document. The PDF sheets here may have been combined to provide the fullest possible technical information about the specific product(s) you have selected. In the original hard copy catalogues the data may have been in more than one section.

Hard copy product catalogues, and CDROMs have been published describing Kuhnke Pneumatics, Solenoids, Relays and Electronics; some divided into different books. A list of current publications is available on the main Kuhnke website [www.kuhnke.co.uk](http://www.kuhnke.co.uk) or from our sales offices.

## Contact Details

Kuhnke sales and service in the UK & Republic of Ireland.

H. Kuhnke Ltd  
Unit 21 Abbey Enterprise Centre  
Premier Way  
Romsey  
Hampshire  
SO51 9AQ  
Great Britain

T: +44 (0)1794 514445

F: +44 (0)1794 513514

Email: [sales@kuhnke.co.uk](mailto:sales@kuhnke.co.uk)

Website: [www.kuhnke.co.uk](http://www.kuhnke.co.uk)

Worldwide delivery service available.

### Important Note

The information shown in these documents is for guidance only. No liability is accepted for any errors or omissions. The designer or user is solely responsible for the safe and proper application of the parts, assemblies or equipment described.

---



## Time Relay Universal 130

- Time relay for relay universal series
- 2 C/O



## Order Code

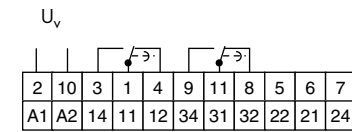
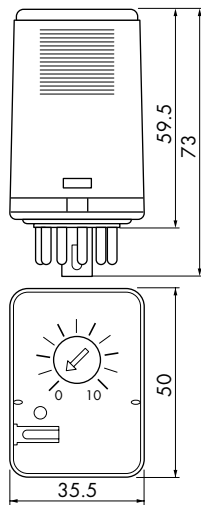
<b>Order code</b>	<b>130</b>	-	<b>2</b>	-	<b>01</b>	-	<b>2</b>	-	<b>3</b>	-	<b>24 VDC/AC</b>
Type of relay	130										
Contact arrangement			2								
Function											
01 Pull-in delay					01						
02 Switch-off delay					02						
03 Blinker					03						
06 Switch-on wiper					06						
Connection diagram											
2 11 pole							2				
Nominal time range / Impulse frequency											
3 0.1 - 3 s approx.									3		
30 0.5 - 30 s approx.									30		
180 2.0 - 180 s approx.									180		
600 4.0 - 600 s (on request)									600		
for function 03											
50 5 - 50 pulses/min approx.									50		
200 40 - 200 pules/min approx.									200		
Nominal voltage											
24 VDC/AC											24 VDC/AC
110 VAC											110 VAC
230 VAC											230 VAC

## Contact Data

	<b>130</b>
Contact arrangement	2 C/O
Type of contact	Single contact
Contact material	AgCdO
Nominal contact current	8 A
Inrush current	≤ 15 A
Nominal contact voltage	250 VAC
Max. switching capacity	2000 VA
Min. switching capacity	100 mA / 5 VDC

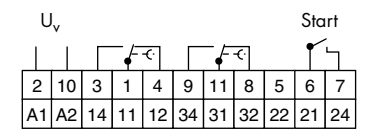


## Dimensions, Connection Diagram(s)



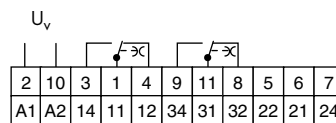
Pull-in delay

01



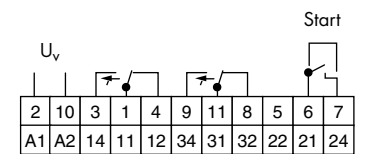
Switch-off delay

02



Blinker

03



Switch-on wiper

06

## General Data

	130
Mechanical service life	> 5 x 10 <sup>6</sup> switching cycles
Electrical service life	> 1 x 10 <sup>5</sup> switching cycles
Test voltage	
Inputs - contact	2500 VAC
Insulation group VDE 0110b/2.79	C250
Ambient temperature	0 °C to +40 °C
Weight	approx. 60 g
Operating range	DC / AC Class 1 0.8 - 1.1 U <sub>N</sub>
Pull-in after coil excitation with U <sub>N</sub> at T <sub>U</sub>	Class a  20 °C
Nominal frequency	40 - 60 Hz
Rated power	0.8 W

## Control Circuit

Relay	130 ... 01, 130 ... 03, 130 ... 06	130 ... 02
Contact voltage	Supply voltage	≤ 15 V
Contact current	≤ 150 mA	≤ 15 mA
Contact load	approx. 1 VA	≤ 0.2 W
Input impedance	approx. 180 Ω	1 kΩ
Pulse duration		≤ 70 ms

## Order Specifications for Accessories

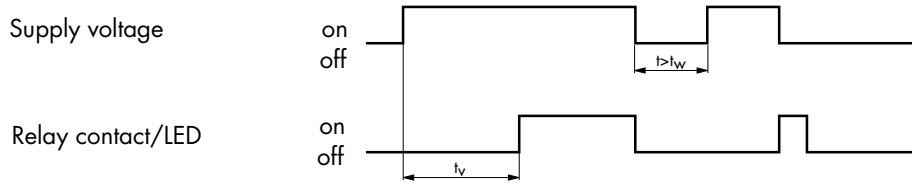
Relay		130
Socket for	Screw connection with quick-action fastening	Z345
		Z393



## Function

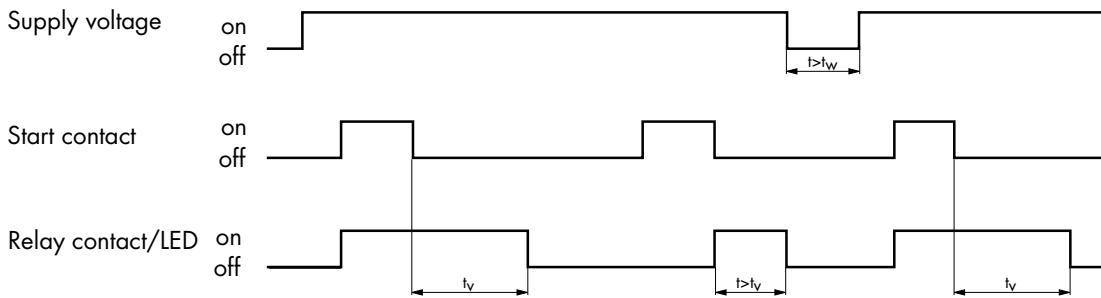
### Pull-in delay 01

#### Switching with supply voltage



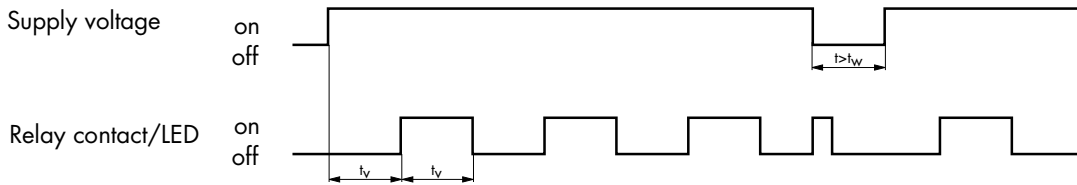
### Switch-off delay 02

#### Switching with start contact



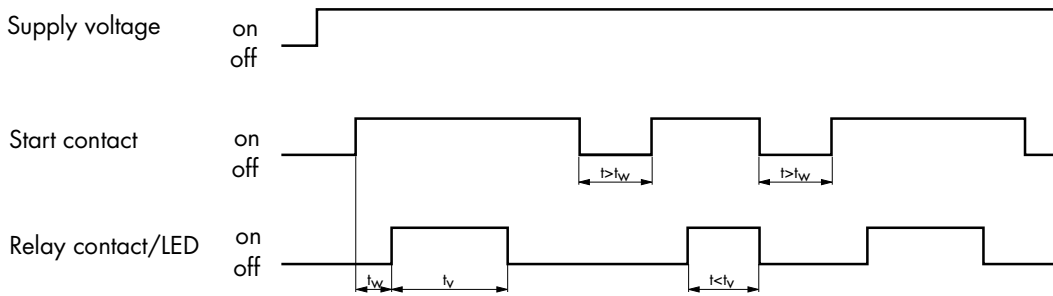
### Blinker 03

#### Switching with supply voltage

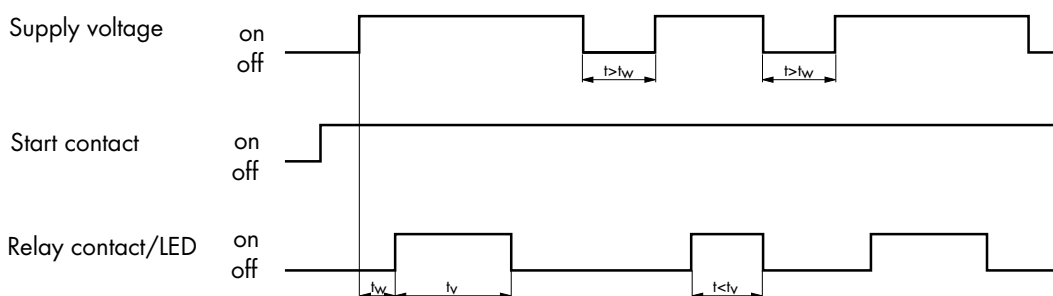


### Switch-on wiper 06

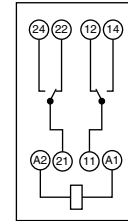
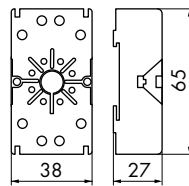
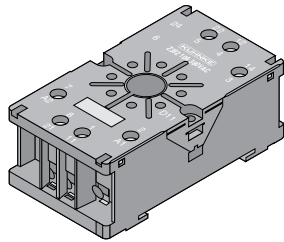
#### Switching with start contact



#### Switching with supply voltage

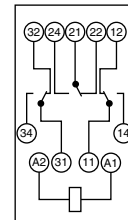
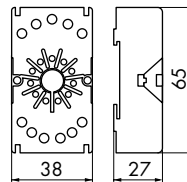
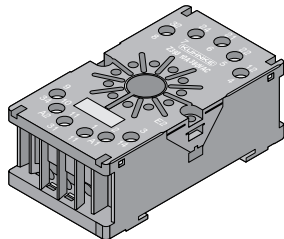


## Socket Z392



Socket	Z392
Socket design	logical, additional modules not supported
Terminal capacity	
solid conductor	2 x 2.5 mm <sup>2</sup>
flexible conductor with ferrule	2 x 2.5 mm <sup>2</sup>
Terminal designation	in accordance with EN50005 and IEC67
Mounting	Rail EN50022-35 x 7.5/15 Screw mounting 2 x M3 or central M4
Screw terminals	Head screws metric M3
Torque in accordance with DIN EN 60999	0.5 Nm
Nominal current	10 A
Insulation group VDE 0110b/2.79	C250, B380
Electrical shock protection	in accordance with VBG4 (professional association), VDE 0106 part 100
Weight	63 g
Retaining clip	Z434

## Socket Z393



Socket	Z393
Socket design	additional modules not supported
Terminal capacity	
solid conductor	2 x 2.5 mm <sup>2</sup>
flexible conductor with ferrule	2 x 2.5 mm <sup>2</sup>
Terminal designation	in accordance with EN50005 and IEC67
Mounting	Rail EN50022-35 x 7.5/15 Screw mounting 2 x M3 or central M4
Screw terminals	Head screws metric M3
Torque in accordance with DIN EN 60999	0.5 Nm
Nominal current	10 A
Insulation group VDE 0110b/2.79	C250, B380
Electrical shock protection	in accordance with VBG4 (professional association), VDE 0106 part 100
Weight	63 g
Retaining clip	Z434